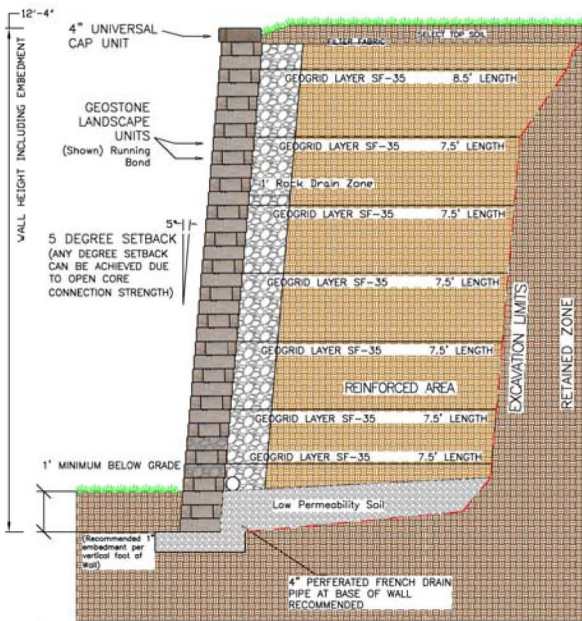
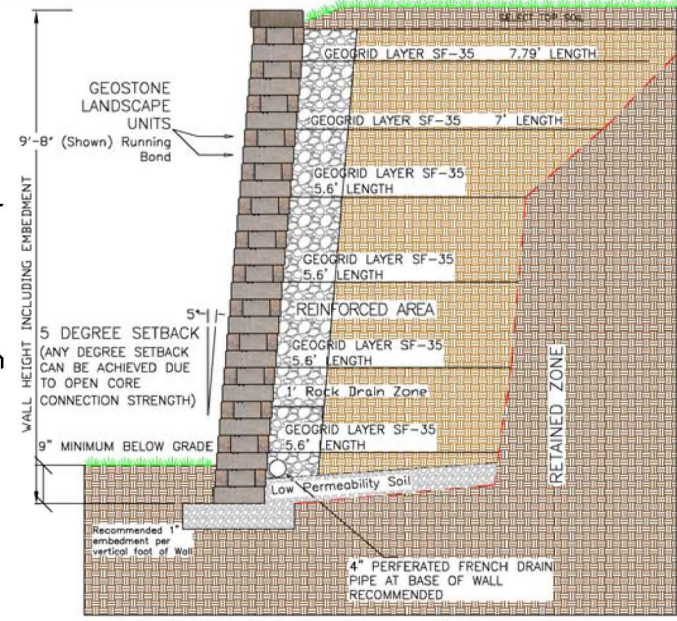


12'-4"



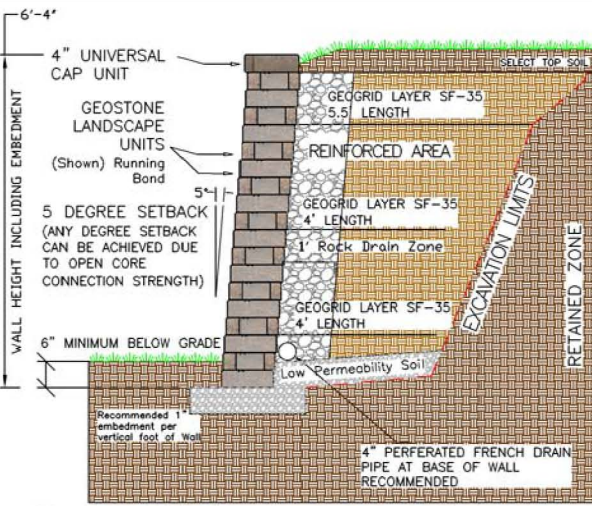
6" THICK COMPACTED CRUSHED ROCK LEVELING PAD  
Typical Reinforced GeoStone Retaining Wall

9'-4"



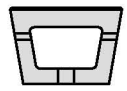
6" THICK COMPACTED CRUSHED ROCK LEVELING PAD  
Typical Reinforced GeoStone Retaining Wall

6'-4"



6" THICK COMPACTED CRUSHED ROCK LEVELING PAD  
Typical Reinforced GeoStone Retaining Wall

**General Notes**  
 GEOSTONE RETAINING WALLS ARE MADE TO ADJUST FOR DIFFERENT HEIGHTS AND SITUATIONS. REINFORCEMENT IS SOMETIMES REQUIRED. PLEASE REFER TO [www.geostone.com](http://www.geostone.com) FOR GENERAL REINFORCING PROCEDURES AND GUIDELINES. ALSO PLEASE NOTE THAT A LOT OF MUNICIPALITIES WILL REQUIRE THAT RETAINING WALLS OVER 4 FEET IN HEIGHT BE DESIGNED AND STAMPED BY A PROFESSIONAL ENGINEER. PLEASE CHECK WITH YOUR LOCAL MUNICIPALITY PRIOR TO ANY CONSTRUCTION.



No.	Revisions/Issues	Date

Per State and Address

Project Name and Address  
 Value  
 Value  
 Value  
 Value

Project	Value	Sheet
Date	5/14/2008	00
Scale	As Noted	